



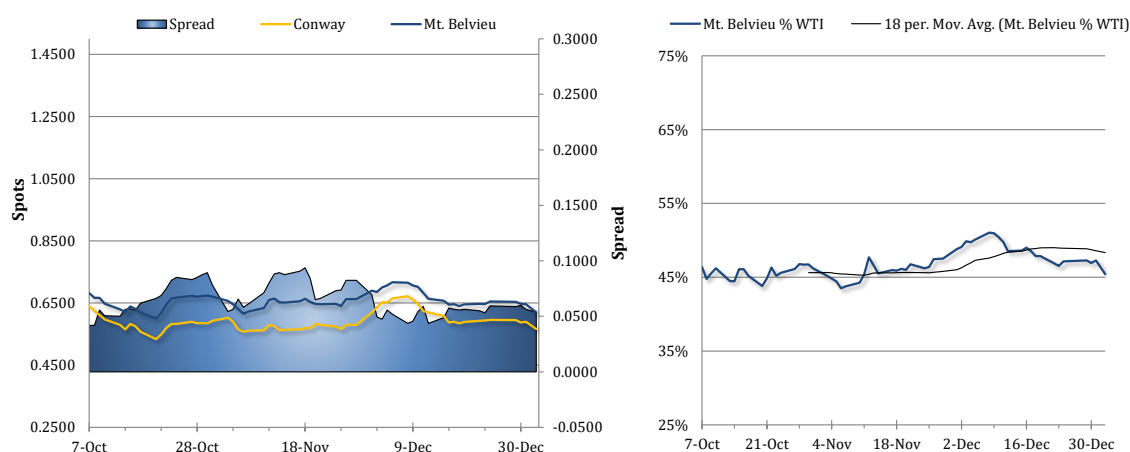
The information provided in this market update is general market commentary provided solely for educational and informational purposes. The information was obtained from sources believed to be reliable, but we do not guarantee its accuracy. No statement within the update should be construed as a recommendation, solicitation or offer to buy or sell any futures or options on futures or to otherwise provide investment advice. Any use of the information provided in this update is at your own risk.

### News Items

Mt. Belvieu TET propane prices fell for a fourth session on Friday as prices dropped 4.1% (2.63 cents) lower to 62.00c/g. Conway prices also fell, down by 4.0% (2.37 cents) to 56.63c/g, causing the north-south spread to narrow slightly to 5.38 cents. Losses in propane were independent as both Brent and WTI crude oil futures edged down 0.2% with some strength in the US dollar index, despite gains in European shares. Natural gas futures also settled in the red, losing 1.8%, with unsupportive developments in the US market.

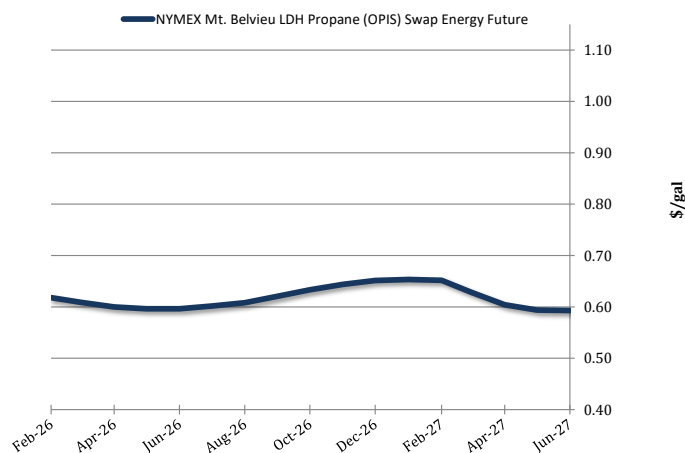
Crude oil and propane prices were moving in opposite directions this morning. Mt. Belvieu TET prices edged down 0.4% (25 points) to 61.75c/g, with non-TET at 58.69c/g. Conway prices saw even smaller losses of 0.2% (13 points), averaging 56.50c/g, indicating further narrowing of the north-south spread which still remains relatively wide. On the other hand, Brent crude was up 1.7% and WTI futures had added 1.6% amid news of the US capturing Venezuelan President Maduro over the weekend, gains in US shares, and flat-to-higher trade in European stock market indexes. Natural gas futures, on the other hand, were falling for a fourth consecutive session, down by a sharp 5.2% as of this writing. In the news, Mt. Belvieu TET swap speculators increased 1,398 long positions, leaving 6,434 as of December 23. The CFTC COT report also showed that shorts reduced their position size by just 93 contracts, leaving 23,642 for a net short position of 17,208.

### Spot Propane Prices



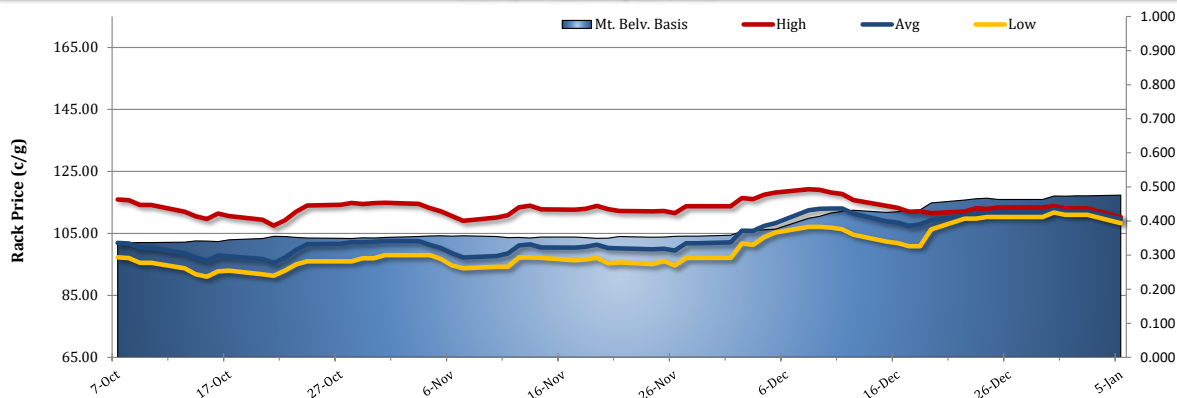
### NYMEX Propane Non-LDH Mt. Belvieu (OPIS) Electronic Futures Chain

Terms	Mt. Belvieu Price
Feb-26	\$0.6179
Mar-26	\$0.6088
Apr-26	\$0.6000
May-26	\$0.5963
Jun-26	\$0.5963
Jul-26	\$0.6017
Aug-26	\$0.6079
Sep-26	\$0.6208
Oct-26	\$0.6333
Nov-26	\$0.6438
Dec-26	\$0.6513
Jan-27	\$0.6533
Feb-27	\$0.6517
Mar-27	\$0.6283
Apr-27	\$0.6042
May-27	\$0.5938
Feb-Apr	\$0.6062





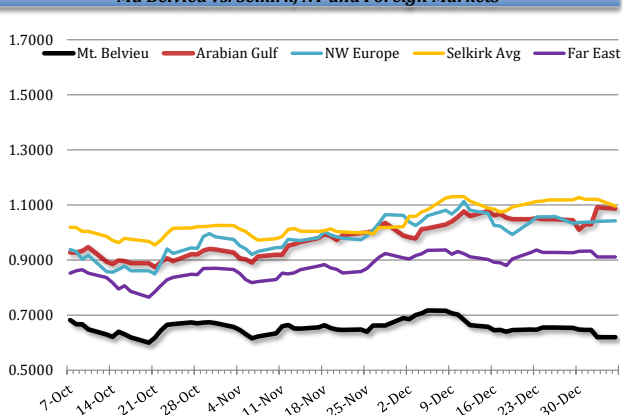
## Selkirk, NY Rack Propane Prices



## International Propane Prices

Series	Date	Close (\$/gal)
Propane Middle East CP	1/5/2026	\$1.0866
Propane NWE CIF	1/5/2026	\$1.0424
Propane Far East CFR	1/4/2026	\$0.9111

## Mt. Belvieu vs. Selkirk, NY and Foreign Markets



## International Butane Prices

Series	Date	Close (\$/gal)
Butane Middle East CP	1/5/2026	\$1.2218
Butane NWE CIF	1/4/2026	\$1.0167
Butane Far East CIF	1/5/2026	\$1.1716

## U.S. Propane/Propylene Inventories

Total Inventories (1,000bbl)				
	U.S.	East Coast	Midwest	Gulf Coast
12/19/2025	99,539	8,011	24,494	61,963
12/26/2025	100,324	7,733	23,639	63,975
Week Chg.	785	-278	-855	2,012
5-yr Avg.	77,376	7,753	21,965	42,971
vs. 5-yr Avg.	22,948	-20	1,674	21,004
	29.7%	-0.3%	7.6%	48.9%
Fractionated Inventories (1,000bbl)				
12/19/2025	63,428	6,661	17,491	36,135
12/26/2025	62,231	6,375	16,643	36,202
% of Total	62%	82%	70%	57%
Week Chg.	-1,197	-286	-848	67
Refiner and Blender Net Production (1,000b/d)				
12/19/2025	2,788	276	489	1,772
12/26/2025	2,853	293	485	1,825
Week Chg.	65	17	-4	53
Other, U.S. (1,000b/d)				
	Imp. Demd.	Net Exp.	Imports	Exports
12/19/2025	910	1,944	166	2,110
12/26/2025	1,224	1,517	175	1,692
Week Chg.	314	-427	9	-418

## Total U.S. Propane/Propylene Stocks (Thousand Barrels)

