

The information provided in this market update is general market commentary provided solely for educational and informational purposes. The information was obtained from sources believed to be reliable, but we do not guarantee its accuracy. No statement within the update should be construed as a recommendation, solicitation or offer to buy or sell any futures or options on futures or to otherwise provide investment advice. Any use of the information provided in this update is at your own risk.

Heating Degree Day Forecast for the Week Ending Saturday, May 2, 2026

Abbrev.	State/Region	MTD HDDs	MTD HDDs	Forecast Total Weekly HDDs	Forecast Weekly	Forecast Weekly	Cumulative HDDs	Cumulative	Cumulative	Cumulative	Cumulative
		As of 4/25/2026	vs. Last Year		Deviation vs. Normal	Deviation vs. Last Year		Deviation vs. Normal	Deviation vs. Last Year	Deviation vs. Normal (%)	Deviation vs. Last Year (%)
CT	CONNECTICUT	389	-19	79	-10	26	5,776	46	473	1	9
DE	DELAWARE	235	-46	68	10	53	4,456	-105	205	-2	5
ME	MAINE	594	-13	120	-9	16	7,276	-131	409	-2	6
MD	MARYLAND	183	-71	73	16	59	4,488	-176	182	-4	4
MA	MASSACHUSETTS	431	-40	96	-5	42	5,977	-18	271	0	5
NH	NEW HAMPSHIRE	528	-17	111	-4	27	7,048	-51	378	-1	6
NJ	NEW JERSEY	306	-44	87	13	62	5,188	5	381	0	8
NY	NEW YORK	393	-48	95	6	52	5,527	-246	427	-4	8
PA	PENNSYLVANIA	282	-97	89	8	47	5,572	-23	238	0	4
RI	RHODE ISLAND	413	-30	103	5	44	5,894	404	463	7	9
VA	VIRGINIA	140	-66	66	16	53	4,040	-266	94	-6	2
VT	VERMONT	535	-51	104	-18	12	7,674	87	422	1	6
NEW	NEW ENGLAND			96	-7	33	6,210	21	364	0	6
MIA	MIDDLE ATLANTIC			91	7	53	5,469	-125	359	-2	7
NEW	NEW ENGLAND (OIL)			98	-7	31	6,325	10	376	0	6
MIA	MIDDLE ATLANTIC (OIL)			92	8	52	5,492	-145	365	-3	7

Normals are 30-year averages from 1981-2010. Cumulative figures are from July 1 through 4/25/2026

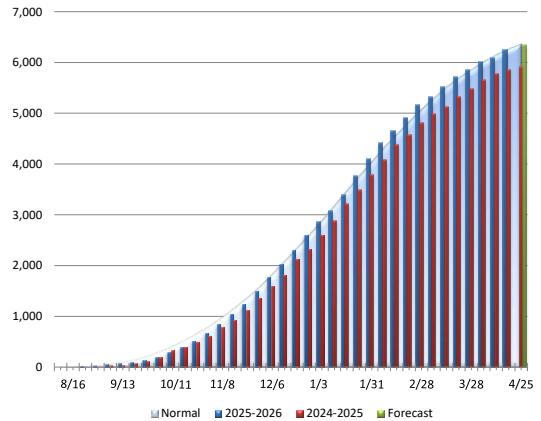
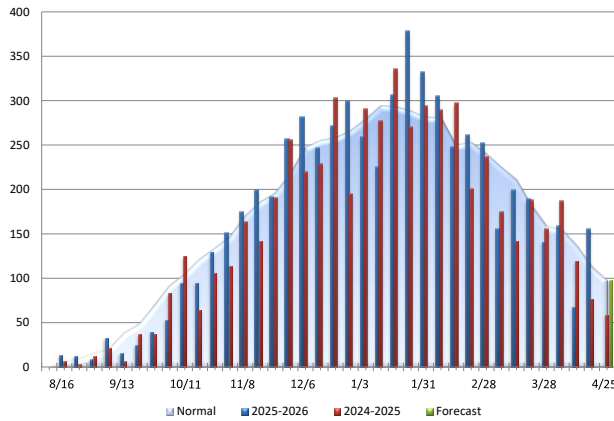
New England Oil Home Heating, Customer Weighted

Total Weekly HDDs

Cumulative HDDs

Change	Comparison
-58	vs. Prior Week
31	vs. Prior Year
-7	vs. Normal

Change	Comparison
376	vs. Prior Year
10	vs. Normal



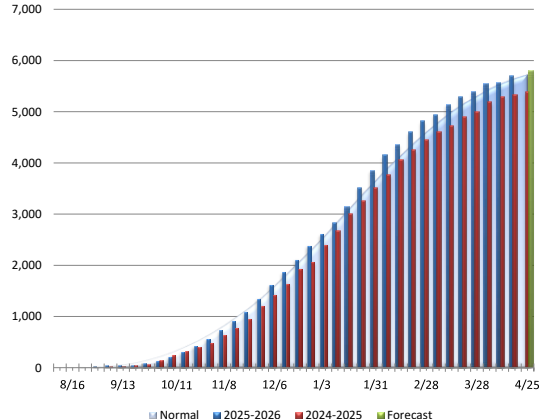
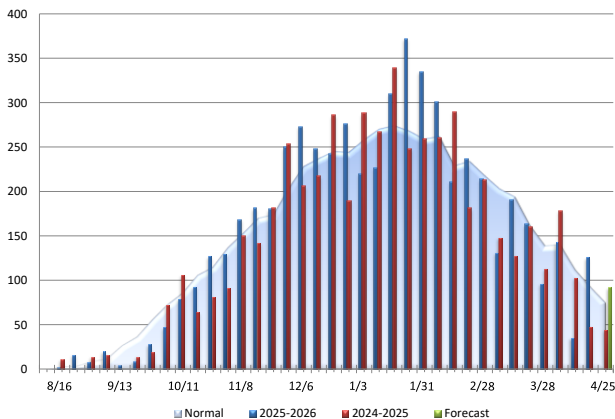
Middle Atlantic Oil Home Heating, Customer Weighted

Total Weekly HDDs

Cumulative HDDs

Change	Comparison
-34	vs. Prior Week
52	vs. Prior Year
8	vs. Normal

Change	Comparison
365	vs. Prior Year
-145	vs. Normal



Source: NOAA. Data are from sources considered reliable. Accuracy is not guaranteed.