

The information provided in this market update is general market commentary provided solely for educational and informational purposes. The information was obtained from sources believed to be reliable, but we do not guarantee its accuracy. No statement within the update should be construed as a recommendation, solicitation or offer to buy or sell any futures or options on futures or to otherwise provide investment advice. Any use of the information provided in this update is at your own risk.

## Heating Degree Day Forecast for the Week Ending Saturday, January 3, 2026

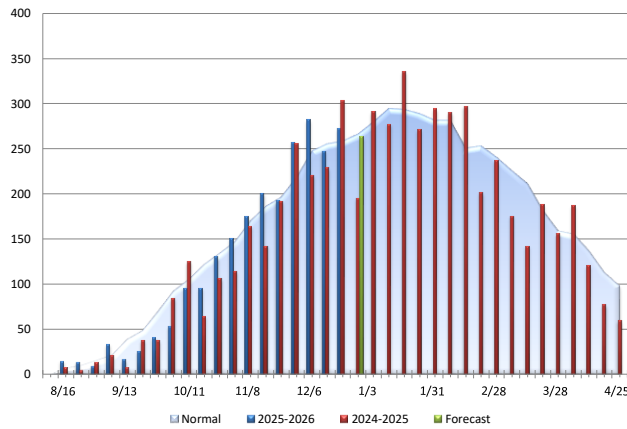
Abbrev.	State/Region	MTD HDDs	MTD HDDs	Forecast Total	Forecast Weekly	Forecast Weekly	Cumulative	Cumulative	Cumulative	Cumulative	Cumulative
		As of 12/27/2025	vs. Last Year	Weekly HDDs	Deviation vs. Normal	Deviation vs. Last Year	HDDs	Deviation vs. Normal	Deviation vs. Last Year	Deviation vs. Normal (%)	Deviation vs. Last Year (%)
CT	CONNECTICUT	952	32	239	-18	68	2,145	38	190	2	10
DE	DELAWARE	838	47	208	-8	56	1,607	-1	155	0	11
ME	MAINE	1,195	118	301	-17	73	2,727	-127	303	-4	13
MD	MARYLAND	831	43	212	-10	59	1,677	-11	166	-1	11
MA	MASSACHUSETTS	979	38	253	-11	66	2,209	-6	161	0	8
NH	NEW HAMPSHIRE	1,143	69	289	-19	68	2,667	-79	256	-3	11
NJ	NEW JERSEY	909	43	237	-2	66	1,883	5	208	0	12
NY	NEW YORK	993	52	251	-7	82	1,981	-111	247	-5	14
PA	PENNSYLVANIA	986	63	247	-7	63	2,176	86	210	4	11
RI	RHODE ISLAND	937	39	239	-3	71	2,181	217	187	11	9
VA	VIRGINIA	772	21	190	-18	45	1,563	-25	157	-2	11
VT	VERMONT	1,217	82	309	-15	83	3,071	133	278	5	10
NEW ENGLAND				259	-13	68	2,317	9	197	0	9
MIDDLE ATLANTIC				247	-5	73	2,021	-27	227	-1	13
NEW ENGLAND (OIL)				263	-14	69	2,365	1	209	0	10
MIDDLE ATLANTIC (OIL)				248	-6	74	2,024	-37	231	-2	13

Normals are 30-year averages from 1981-2010. Cumulative figures are from July 1 through 12/27/2025

### New England Oil Home Heating, Customer Weighted

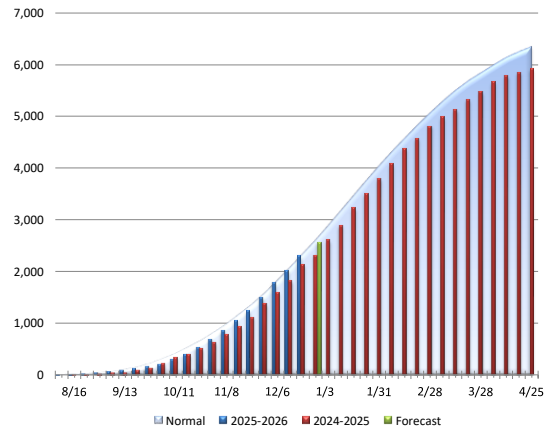
#### Total Weekly HDDs

Change	Comparison
-9	vs. Prior Week
69	vs. Prior Year
-14	vs. Normal



#### Cumulative HDDs

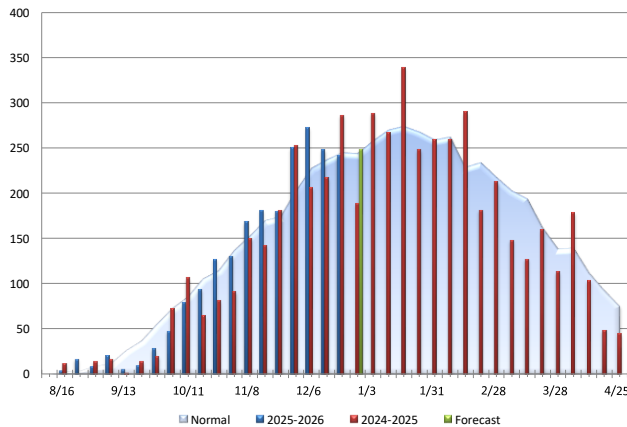
Change	Comparison
209	vs. Prior Year
1	vs. Normal



### Middle Atlantic Oil Home Heating, Customer Weighted

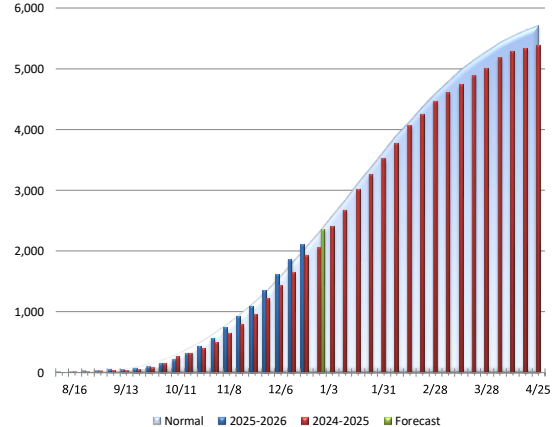
#### Total Weekly HDDs

Change	Comparison
6	vs. Prior Week
74	vs. Prior Year
-6	vs. Normal



#### Cumulative HDDs

Change	Comparison
231	vs. Prior Year
-37	vs. Normal



Source: NOAA. Data are from sources considered reliable. Accuracy is not guaranteed.