

The information provided in this market update is general market commentary provided solely for educational and informational purposes. The information was obtained from sources believed to be reliable, but we do not guarantee its accuracy. No statement within the update should be construed as a recommendation, solicitation or offer to buy or sell any futures or options on futures or to otherwise provide investment advice. Any use of the information provided in this update is at your own risk.

Heating Degree Day Forecast for the Week Ending Saturday, October 11, 2025

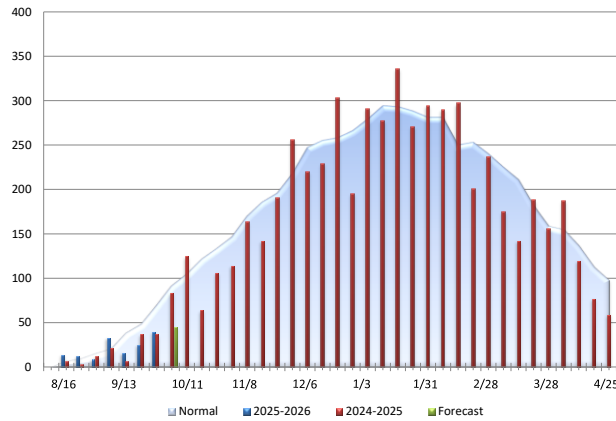
Abbrev.	State/Region	MTD HDDs	MTD HDDs	Forecast Total Weekly HDDs	Forecast Weekly	Forecast Weekly	Cumulative HDDs	Cumulative	Cumulative	Cumulative	Cumulative
		As of 10/4/2025	vs. Last Year		Deviation vs. Normal	Deviation vs. Last Year		Deviation vs. Normal	Deviation vs. Last Year	Deviation vs. Normal (%)	Deviation vs. Last Year (%)
CT	CONNECTICUT	30	13	35	-42	-28	179	10	13	6	8
DE	DELAWARE	15	15	17	-30	-19	19	-44	8	-	-
ME	MAINE	48	11	57	-56	-36	249	-142	68	-36	38
MD	MARYLAND	11	9	20	-30	-21	24	-51	6	-	-
MA	MASSACHUSETTS	36	13	41	-43	-37	135	-72	28	-35	26
NH	NEW HAMPSHIRE	44	15	58	-51	-41	218	-124	39	-36	22
NJ	NEW JERSEY	20	15	26	-39	-20	43	-69	7	-62	19
NY	NEW YORK	28	13	34	-39	-22	49	-124	11	-72	29
PA	PENNSYLVANIA	22	11	37	-37	-32	154	-16	5	-9	3
RI	RHODE ISLAND	31	9	47	-24	-23	211	55	23	35	12
VA	VIRGINIA	11	10	16	-33	-17	26	-50	13	-	-
VT	VERMONT	50	22	62	-54	-49	422	15	44	4	12
NEW NEW ENGLAND				44	-44	-35	182	-50	29	-22	19
MIA MIDDLE ATLANTIC				33	-39	-25	80	-80	8	-50	11
NEW NEW ENGLAND (OIL)				45	-45	-35	193	-54	32	-22	20
MIA MIDDLE ATLANTIC (OIL)				34	-38	-25	79	-84	9	-52	13

Normals are 30-year averages from 1981-2010. Cumulative figures are from July 1 through 10/4/2025

New England Oil Home Heating, Customer Weighted

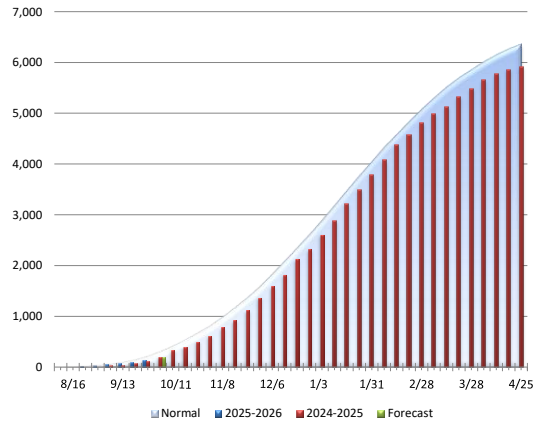
Total Weekly HDDs

Change	Comparison
5	vs. Prior Week
-35	vs. Prior Year
-45	vs. Normal



Cumulative HDDs

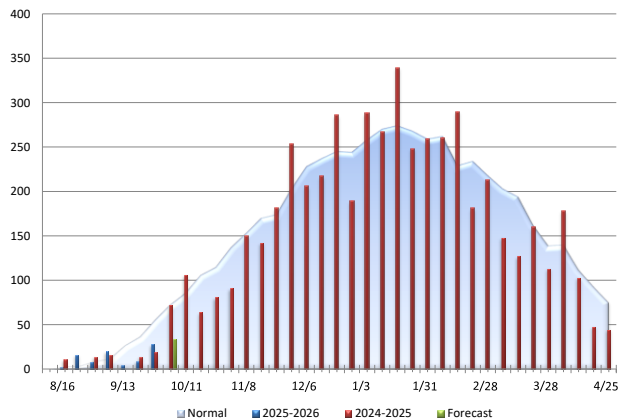
Change	Comparison
32	vs. Prior Year
-54	vs. Normal



Middle Atlantic Oil Home Heating, Customer Weighted

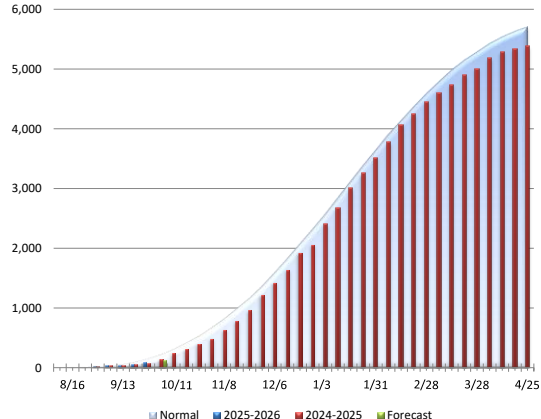
Total Weekly HDDs

Change	Comparison
6	vs. Prior Week
-25	vs. Prior Year
-38	vs. Normal



Cumulative HDDs

Change	Comparison
9	vs. Prior Year
-84	vs. Normal



Source: NOAA. Data are from sources considered reliable. Accuracy is not guaranteed.