

The information provided in this market update is general market commentary provided solely for educational and informational purposes. The information was obtained from sources believed to be reliable, but we do not guarantee its accuracy. No statement within the update should be construed as a recommendation, solicitation or offer to buy or sell any futures or options on futures or to otherwise provide investment advice. Any use of the information provided in this update is at your own risk.

## Heating Degree Day Forecast for the Week Ending Saturday, April 5, 2025

Abbrev.	State/Region	MTD HDDs As of 3/29/2025	MTD HDDs vs. Last Year	Forecast Total Weekly HDDs	Forecast Weekly Deviation vs. Normal	Forecast Weekly Deviation vs. Last Year	Cumulative HDDs	Cumulative Deviation vs. Normal	Cumulative Deviation vs. Last Year	Cumulative Deviation vs. Normal (%)	Cumulative Deviation vs. Last Year (%)
CT	CONNECTICUT	675	19	91	-63	-56	4,864	-364	396	-7	9
DE	DELAWARE	526	19	37	-79	-78	3,971	-227	354	-5	10
ME	MAINE	941	63	186	-13	-8	6,194	-542	489	-8	9
MD	MARYLAND	507	7	33	-81	-84	4,048	-260	347	-6	9
MA	MASSACHUSETTS	741	14	109	-56	-55	5,200	-248	460	-5	10
NH	NEW HAMPSHIRE	875	42	154	-34	-31	6,061	-414	702	-6	13
NJ	NEW JERSEY	596	17	76	-59	-62	4,436	-311	345	-7	8
NY	NEW YORK	704	7	109	-48	-45	4,660	-604	329	-11	8
PA	PENNSYLVANIA	639	11	73	-70	-70	4,937	-197	461	-4	10
RI	RHODE ISLAND	694	15	120	-37	-37	4,951	-15	401	0	9
VA	VIRGINIA	466	7	23	-78	-60	3,740	-253	251	-6	7
VT	VERMONT	903	19	166	-35	-29	6,606	-318	575	-5	10
NEW	NEW ENGLAND			119	-49	-46	5,328	-304	469	-5	10
MIA	MIDDLE ATLANTIC			91	-57	-56	4,698	-417	373	-8	9
NEW	NEW ENGLAND (OIL)			125	-46	-43	5,418	-330	476	-6	10
MIA	MIDDLE ATLANTIC (OIL)			94	-56	-55	4,709	-443	370	-9	9

Normals are 30-year averages from 1981-2010. Cumulative figures are from July 1 through 3/29/2025

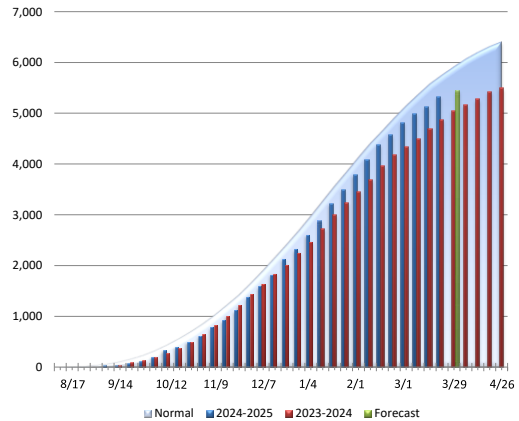
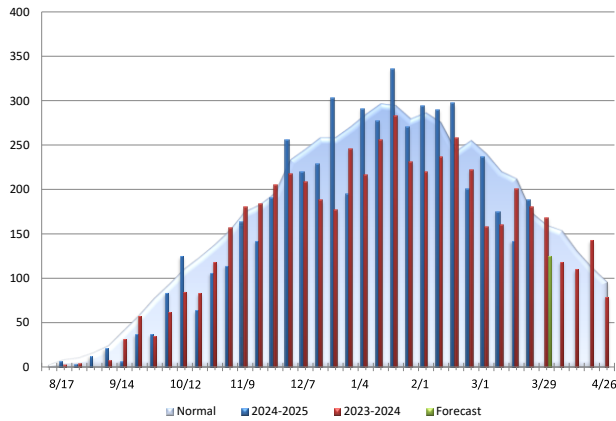
### New England Oil Home Heating, Customer Weighted

Total Weekly HDDs

Cumulative HDDs

Change	Comparison
-63	vs. Prior Week
-43	vs. Prior Year
-46	vs. Normal

Change	Comparison
476	vs. Prior Year
-330	vs. Normal



### Middle Atlantic Oil Home Heating, Customer Weighted

Total Weekly HDDs

Cumulative HDDs

Change	Comparison
-66	vs. Prior Week
-55	vs. Prior Year
-56	vs. Normal

Change	Comparison
370	vs. Prior Year
-443	vs. Normal

