

The information provided in this market update is general market commentary provided solely for educational and informational purposes. The information was obtained from sources believed to be reliable, but we do not guarantee its accuracy. No statement within the update should be construed as a recommendation, solicitation or offer to buy or sell any futures or options on futures or to otherwise provide investment advice. Any use of the information provided in this update is at your own risk.

Heating Degree Day Forecast for the Week Ending Saturday, February 8, 2025

Abbrev.	State/Region	MTD HDDs As of 2/1/2025	MTD HDDs vs. Last Year	Forecast Total Weekly HDDs	Forecast Weekly Deviation vs. Normal	Forecast Weekly Deviation vs. Last Year	Cumulative HDDs	Cumulative Deviation vs. Normal	Cumulative Deviation vs. Last Year	Cumulative Deviation vs. Normal (%)	Cumulative Deviation vs. Last Year (%)
CT	CONNECTICUT	31	2	228	-35	5	3,309	-159	197	-5	6
DE	DELAWARE	25	-2	192	-31	2	2,663	-95	247	-3	10
ME	MAINE	48	6	303	-22	35	4,021	-516	238	-11	6
MD	MARYLAND	24	-1	191	-34	3	2,734	-132	230	-5	9
MA	MASSACHUSETTS	35	2	240	-31	12	3,438	-175	309	-5	10
NH	NEW HAMPSHIRE	43	6	293	-20	44	3,984	-387	448	-9	13
NJ	NEW JERSEY	29	1	222	-21	23	2,956	-183	234	-6	9
NY	NEW YORK	37	7	244	-23	5	3,206	-259	97	-7	3
PA	PENNSYLVANIA	34	6	222	-36	21	3,365	-65	303	-2	10
RI	RHODE ISLAND	32	2	238	-13	20	3,297	47	288	1	10
VA	VIRGINIA	19	-5	156	-49	-24	2,561	-117	166	-4	7
VT	VERMONT	50	15	308	-27	38	4,441	-216	349	-5	9
NEW	NEW ENGLAND			250	-28	17	3,542	-206	288	-5	9
MIA	MIDDLE ATLANTIC			233	-26	14	3,202	-184	190	-5	6
NEW	NEW ENGLAND (OIL)			256	-28	19	3,597	-234	284	-6	9
MIA	MIDDLE ATLANTIC (OIL)			234	-27	12	3,217	-191	177	-6	6

Normals are 30-year averages from 1981-2010. Cumulative figures are from July 1 through 2/1/2025

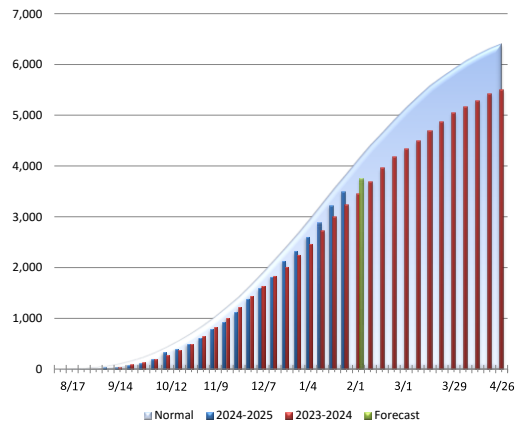
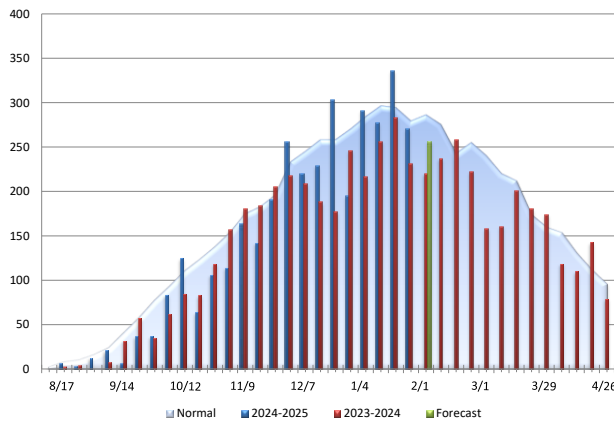
New England Oil Home Heating, Customer Weighted

Total Weekly HDDs

Cumulative HDDs

Change	Comparison
-15	vs. Prior Week
19	vs. Prior Year
-28	vs. Normal

Change	Comparison
284	vs. Prior Year
-234	vs. Normal



Middle Atlantic Oil Home Heating, Customer Weighted

Total Weekly HDDs

Cumulative HDDs

Change	Comparison
-14	vs. Prior Week
12	vs. Prior Year
-27	vs. Normal

Change	Comparison
177	vs. Prior Year
-191	vs. Normal

