

The information provided in this market update is general market commentary provided solely for educational and informational purposes. The information was obtained from sources believed to be reliable, but we do not guarantee its accuracy. No statement within the update should be construed as a recommendation, solicitation or offer to buy or sell any futures or options on futures or to otherwise provide investment advice. Any use of the information provided in this update is at your own risk.

Heating Degree Day Forecast for the Week Ending Saturday, February 22, 2025

Abbrev.	State/Region	MTD HDDs	MTD HDDs	Forecast Total Weekly HDDs	Forecast Weekly	Forecast Weekly	Cumulative HDDs	Cumulative	Cumulative	Cumulative	Cumulative	Cumulative Deviation vs. Last Year (%)
		As of 2/15/2025	vs. Last Year		Deviation vs. Normal	Deviation vs. Last Year		Deviation vs. Normal	Deviation vs. Last Year			
CT	CONNECTICUT	558	112	266	22	20	3,830	-156	276	-4	8	
DE	DELAWARE	443	62	229	26	19	3,079	-117	312	-4	11	
ME	MAINE	739	189	321	19	15	4,719	-457	426	-9	10	
MD	MARYLAND	436	70	238	34	31	3,151	-155	307	-5	11	
MA	MASSACHUSETTS	596	126	277	25	18	4,004	-143	437	-3	12	
NH	NEW HAMPSHIRE	702	190	326	36	33	4,652	-335	639	-7	16	
NJ	NEW JERSEY	496	82	255	30	20	3,431	-187	323	-5	10	
NY	NEW YORK	573	117	287	38	42	3,723	-269	144	-7	4	
PA	PENNSYLVANIA	527	106	275	38	33	3,855	-82	405	-2	12	
RI	RHODE ISLAND	556	101	273	38	19	3,826	81	390	2	11	
VA	VIRGINIA	372	37	224	38	35	2,917	-163	208	-5	8	
VT	VERMONT	725	186	344	31	33	5,119	-199	521	-4	11	
NEW	NEW ENGLAND			285	26	20	4,120	-177	415	-4	11	
MIA	MIDDLE ATLANTIC			276	36	35	3,702	-195	263	-5	8	
NEW	NEW ENGLAND (OIL)			289	26	20	4,187	-204	416	-5	11	
MIA	MIDDLE ATLANTIC (OIL)			279	37	36	3,720	-202	246	-5	7	

Normals are 30-year averages from 1981-2010. Cumulative figures are from July 1 through 2/15/2025

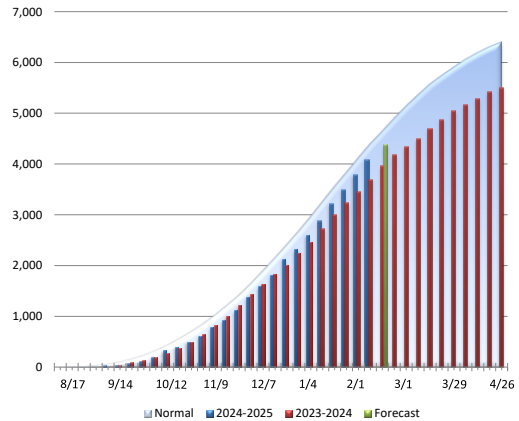
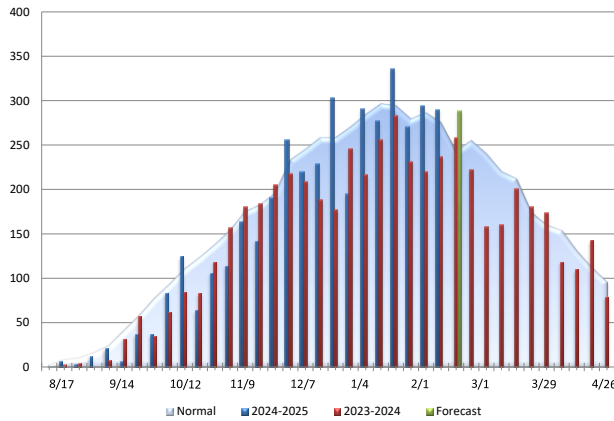
New England Oil Home Heating, Customer Weighted

Total Weekly HDDs

Cumulative HDDs

Change	Comparison
-1	vs. Prior Week
20	vs. Prior Year
26	vs. Normal

Change	Comparison
416	vs. Prior Year
-204	vs. Normal



Middle Atlantic Oil Home Heating, Customer Weighted

Total Weekly HDDs

Cumulative HDDs

Change	Comparison
19	vs. Prior Week
36	vs. Prior Year
37	vs. Normal

Change	Comparison
246	vs. Prior Year
-202	vs. Normal

