

The information provided in this market update is general market commentary provided solely for educational and informational purposes. The information was obtained from sources believed to be reliable, but we do not guarantee its accuracy. No statement within the update should be construed as a recommendation, solicitation or offer to buy or sell any futures or options on futures or to otherwise provide investment advice. Any use of the information provided in this update is at your own risk.

## Heating Degree Day Forecast for the Week Ending Saturday, January 4, 2025

Abbrev.	State/Region	MTD HDDs	MTD HDDs	Forecast Total Weekly HDDs	Forecast Weekly	Forecast Weekly	Cumulative HDDs	Cumulative	Cumulative	Cumulative	Cumulative
		As of 12/28/2024	vs. Last Year		Deviation vs. Normal	Deviation vs. Last Year		Deviation vs. Normal	Deviation vs. Last Year	Deviation vs. Normal (%)	Deviation vs. Last Year (%)
CT	CONNECTICUT	955	221	159	-99	-51	2,024	-119	84	-6	4
DE	DELAWARE	816	174	145	-72	-30	1,476	-162	40	-10	3
ME	MAINE	1,121	186	211	-108	-41	2,475	-423	113	-15	5
MD	MARYLAND	811	167	152	-71	-25	1,533	-186	25	-11	2
MA	MASSACHUSETTS	976	212	173	-92	-38	2,085	-167	149	-7	8
NH	NEW HAMPSHIRE	1,117	259	213	-96	-17	2,460	-330	228	-12	10
NJ	NEW JERSEY	897	209	165	-75	-18	1,706	-205	48	-11	3
NY	NEW YORK	975	215	179	-80	-50	1,900	-228	28	-11	1
PA	PENNSYLVANIA	951	211	179	-76	-24	1,993	-133	76	-6	4
RI	RHODE ISLAND	930	208	166	-77	-33	2,029	31	153	2	8
VA	VIRGINIA	771	145	140	-69	-48	1,426	-191	0	-12	0
VT	VERMONT	1,179	253	215	-110	-35	2,840	-144	157	-5	6
NEW	NEW ENGLAND			178	-95	-39	2,168	-178	137	-8	7
MIA	MIDDLE ATLANTIC			176	-78	-35	1,888	-195	47	-9	3
NEW	NEW ENGLAND (OIL)			181	-97	-39	2,206	-198	136	-8	7
MIA	MIDDLE ATLANTIC (OIL)			177	-78	-38	1,899	-197	45	-9	2

Normals are 30-year averages from 1981-2010. Cumulative figures are from July 1 through 12/28/2024

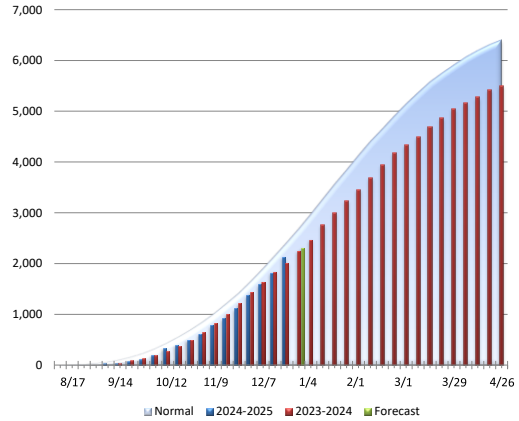
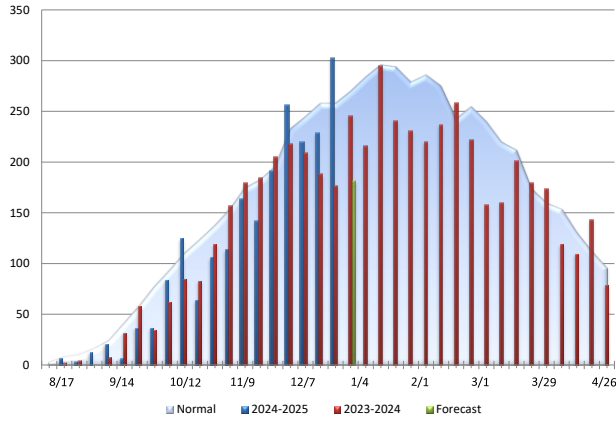
### New England Oil Home Heating, Customer Weighted

Total Weekly HDDs

Cumulative HDDs

Change	Comparison
-122	vs. Prior Week
-39	vs. Prior Year
-97	vs. Normal

Change	Comparison
136	vs. Prior Year
-198	vs. Normal



### Middle Atlantic Oil Home Heating, Customer Weighted

Total Weekly HDDs

Cumulative HDDs

Change	Comparison
-109	vs. Prior Week
-38	vs. Prior Year
-78	vs. Normal

Change	Comparison
45	vs. Prior Year
-197	vs. Normal

